

Anomaly Dig SOW – Value Prop

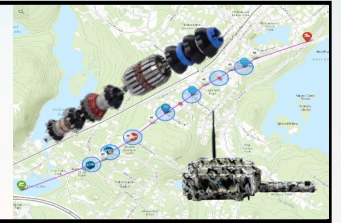
6. Final Remediation

- Certified inspectors for remediation (NACE, CWI, Safety, Environmental, Chief, etc)
- Sub-Meter GPS and As-Built documentation for welds or sleeves and final repair work



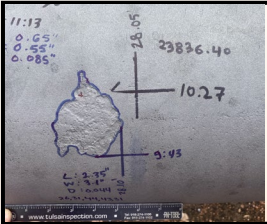
1. Pig Tracking

- AGM Survey & Pig Tracking (Cleaning, Gauging, ILI tools). Remote tracking is also available



5. Anomaly Mapping

- Conduct ECDA/ICDA functions
- Verify pipeline anomaly defects via NDE (PAUT, AUT, MPI, DP, Craform, etc)
- Soil Resistivity/PH & Pipe-to-soil AC/DC



VALUE PROPOSITION

Complete turn-key solution designed to save costs, optimize use of field personnel, standardize reporting, and streamline operations to tailor fit customer's pipeline anomaly dig program.

2. Dig Staking & GIS Data

- GPS site staking based on ILI defect coordinates
- GPS point location for GIS databases & Centerline surveys for alignment sheets.



4. Inspection

- NACE level coating inspection for excavated and/or re-coated pipeline
- CWI or Chief Inspectors for repairs



3. Excavation Support

- Inspector oversight and documentation
- Digital as-built documentation for pipeline welds and resulting repair

