



CAPABILITY STATEMENT

CF Inspection Management, LLC ("CFI"), established in 2015, is a nationally qualified women owned inspection, integrity and environmental services business, certified as a National Women's Business Enterprise by the Women's Business Enterprise National Council. In addition, CFI has received and continues to maintain its Certificate of Eligibility from the Supplier Clearinghouse for the Utility Supplier Diversity Program of the California Public Utilities Commission. CFI offers a comprehensive range of inspection and asset integrity services for the energy and utilities industries. CFI is a partially owned affiliate of Tulsa Inspection Resources, LLC ("TIR"). Based on this affiliation, CFI has access to unique and proprietary inspection and asset integrity equipment and processes.



CORE CAPABILITIES

Inspection Services

- API 653 Certified Tank Inspector
- API 510 Certified Pressure Vessel Inspector
- API 570 Certified Process Piping Inspector
- API 1169 Certified Pipeline Construction Inspector
- CWI Inspectors (All levels)
- NACE Inspection Crews (CIP All levels)
- Project Manager/Construction Manager
- Chief/Assistant Chief Inspector
- Fabrication, Material, Electrical & Instrumental
- NDE, Utility & Environmental
- Polyethylene Pipe Inspector

Pipeline Integrity Support Services

- Traditional Tracking & AGM Deployment
- Remote Tracking
- Survey, AGM & Construction
- Anomaly Staking & As-Built Documentation
- Excavation Profile Survey
- Depth of Cover & GPS Centerline Surveys

Non-Destructive Examination (NDE)

- Conventional
 - Magnetic Particle
 - Dye Penetrant Testing
 - Ultrasonic Thickness & Shear Wave
 - Pipe to Soil, Soil Resistivity & pH
 - Pit Depth Gauging
 - MIC and Coating Inspection
- Advanced
 - Phased Array Ultrasonic Testing (PAUT)
 - Time of Flight Diffraction (TOFD)
 - Automated Ultrasonic Testing (AUT)
 - Automated Corrosion Mapping
 - Eddy Current (Sharck & Spyne)
 - Creaform Anomaly Mapping (Laser Scanning)
 - Optical Emission Spectroscopy (OES)
 - Laser Induced Breakdown Spectroscopy (LIBS)
 - Positive Material Identification (PMI)
 - MFL Floor Scanning (Liquid Storage Tanks)
 - HydroForm & FlexoForm Phased Array

NAICS & SIC CODES

213112- Support for O&G Ops	332420- Metal Tank	486210- Pipeline Transport, N.G.	541620- Environmental Svcs	SIC 1389- O&G Field Services
237110- Water and Sewer Line	334519- UT Equipment Svcs	486910- Pipeline Transport, R.P.	541990- Pipeline Inspection	SIC 7389- Business Services
237120- Oil & Gas Pipeline Svc	486110- Pipeline Transport, Crude	541380- NDE Inspection Svcs	811310- O&G Maintenance Svcs	

Cindy A. Stephenson
President/Owner

(918) 477-8465
5727 South Lewis Ave, Suite 310
Tulsa, Oklahoma 74105

contactus@cfinspectionmanagement.com

President & Owner | CF Inspection Management LLC



Cindy A. Stephenson

Cynthia Stephenson is the founder, President, and CEO of CF Inspection, a Women's Business Enterprise ("WBE") certified by the Supplier Clearinghouse in California and Nationally by the Women's Business Enterprise National Council.

Ms. Stephenson also serves on the Board of Tulsa Inspection Resources, LLC since 2018. Ms. Stephenson is a material investor in the Partnership and serves on the board of directors.

After graduating in 1984 from the University of Oklahoma with a Business degree Ms. Stephenson went to work for Vintage Petroleum. At Vintage, she secured properties for oil and gas wells working in their land department. Once starting a family she retired and went into volunteerism and philanthropy.

In 1992 Ms. Stephenson went to work for the Charles and Peggy Stephenson Family Foundation as the Executive Director and Trustee. She has also served as past President of the Gilcrease Museum National Board and is currently a board member. Ms. Stephenson believes it is important to be involved and connected to your community.

CF Inspection has assembled an integrated professional team capable of supporting all phases of project execution for any energy customer. Currently working for:



Successfully secured long term inspection contracts with one of the largest national utility providers



\$18 - \$22MM in Annual Revenue

Job creation for 100+ Workers

Meeting the operators' minority spend quotas

Additional Accomplishments:

CFI is registered to work for Utility, Municipal and Energy companies

Created gateway for asset owners to satisfy minority owned spend requirements

CWI, API 653, API 510, API 570, NACE

Access to extensive database of over 9,000 professional inspectors



5727 South Lewis Ave, Suite 310
Tulsa, Oklahoma 74105

(918) 477-8465

contactus@cfinspectionmanagement.com

Where we can help:

3 Main Divisions

Pipeline Integrity Services

1



Pipeline Integrity Support

2



Non-Destructive Examination (NDE)

Pipeline Construction & Repair Services

3



Inspection Services



5727 South Lewis Ave, Suite 310
Tulsa, Oklahoma 74105

(918) 477-8465

contactus@cfinspectionmanagement.com

Pipeline Integrity Services

Pipeline Integrity Support

- Above Ground Marker (AGM) GPS surveys – sub-cm/dm/m
- Pig Tracking – cleaning, batching, gauging, purging, in-line inspection
- In-line inspection lifting and loading / unloading
- Anomaly Dig Staking & As-Built documentation
- Excavation Profile Survey
- Pipeline Depth of Cover & GPS Centerline Surveys
- Pipeline Marker Placement and Installation
- NORM and Benzene Monitoring
- Remote Pig Tracking & Online Pig Tracking application
 - a. Can see & hear AGM passage from PC or laptop
 - b. Notifications via Text and/or Email



Non-Destructive Examination (NDE)

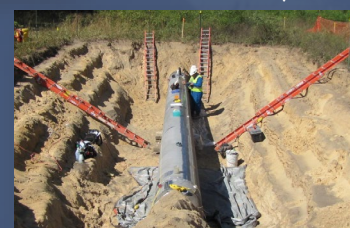
Conventional:

- Magnetic Particle
- Dye Penetrant Testing
- Ultrasonic Thickness, Shear Wave
- Pipe to Soil, Soil Resistivity & pH
- Pit Depth Gauging
- Microbiologically Influenced Corrosion
- Coating Inspection (AMPP/NACE)
- ASNT Lvl II & III Technicians



Advanced:

- Manual & Encoded Phased Array
- Time of Flight Diffraction (TOFD)
- Eddy Current PA
- Laser Profilometry (Laser Scanning)
- Optical Emission Spectroscopy (OES)
- Positive Material Identification (PMI)



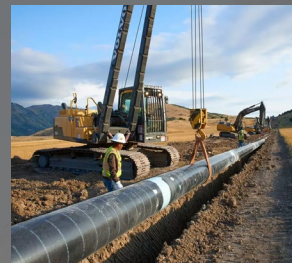
Pipeline Inspection Services



Pipeline New Construction Inspection Services

NEW CONSTRUCTION INSPECTOR CLASSIFICATIONS:

- Project Manager/Construction Manager
- Chief Inspector
- Assistant Chief Inspector
- API 653 Certified Tank Inspector
- API 510 Certified Pressure Vessel Inspector
- API 570 Certified Process Piping Inspector
- API 1169 Certified Pipeline Construction Inspector
- Senior AWS CWI Certified Welding Inspector
- AWS CWI Certified Welding Inspector
- CPWI Certified Welding Inspector
- Safety Inspector
- Materials Inspector
- Office Administrator
- NACE Coating Inspector
- E&I Inspector
- Environmental Inspector
- Mechanical/Civil Inspector
- Utility Inspector
- Polyethylene (PE)



Pipeline Repair/Replacement & Remediation Inspection Services

REPAIR/REPLACEMENT INSPECTOR CLASSIFICATIONS:

- Project Manager/Construction Manager
- Chief Inspector
- Assistant Chief Inspector
- API 1169 Certified Pipeline Construction Inspector
- Senior AWS CWI Certified Welding Inspector
- AWS CWI Certified Welding Inspector
- CPWI Certified Welding Inspector
- Safety Inspector
- Materials Inspector
- NACE Coating Inspector
- E&I Inspector
- Environmental Inspector
- Utility Inspector
- Polyethylene (PE)

